

# Magneto+Diodo Laser Therapy Machine

## PMST NEO+



# Attention

Respected user:

Thank you for choosing the instruments which carefully designed and manufactured by our company.

In order to better utilize the product, we sincerely recommend:

- ◆◆ Please read this manual carefully before using the instrument.
- ◆◆ Please install, use and operate correctly according to the requirements in the manual.
- ◆◆ Do not disassemble or modify any parts of this machine.
- ◆◆ Except for authorized personnel of the company, it is strictly forbidden to open the cover and disassemble the host.
- ◆◆ Non-professionals are strictly forbidden to carry out repairs and renovations.
- ◆◆ If there is any malfunction during the operation, please contact us.

Due to continuous improvement, update, and replacement of the product, the products received may not be exactly same as the illustration in the manual. We sincerely apologize.


**Notice: Please read this manual carefully before operating this machine.**

# Magneto + Diodo laser Therapy Machine

## 【1】 Product Appearance (For reference only, subject to the actual product)



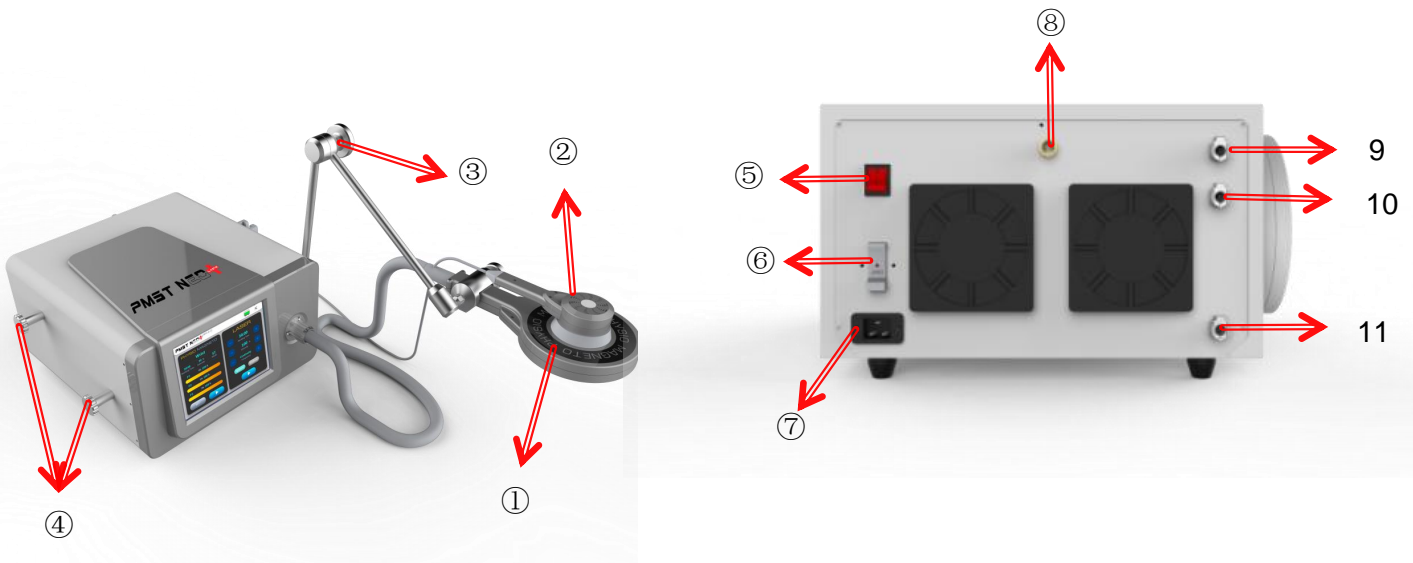
## 【2】 Part lists

			
<p>Machine*1</p>	<p>Holding arm*1</p>	<p>Magneto handle*1</p>	<p>laser handle*1</p>
			
<p>Silicone case*1</p>	<p>Power line*1</p>	<p>Water tube*2</p>	<p>Holding arm supporter*1</p>

### 【3】 Technical Parameters

Strength at the coil	5 Tesla	Heat dissipation	Water cooling system
Frequency in MT mode	1-100Hz	Intuitive System	Preset parameters for ten body parts
Frequency in ST mode	1000-3000Hz		
Wavelength of Laser	650nm/808nm	Laser power	5600MW
Package	Alu box	Output power	1500W
Package size	66*60*50cm	Gross weight	45kg
Password	888888		

### 【4】 Structure of the machine and how to install it



Structure: ①Magneto applicator ②Laser handle ③Holding arm ④Magneto applicator supporter ⑤ Key switch ⑥Fuse ⑦Power outlet ⑧ Laser outlet ⑨Water inlet ⑩Water overflow ⑪Water outlet

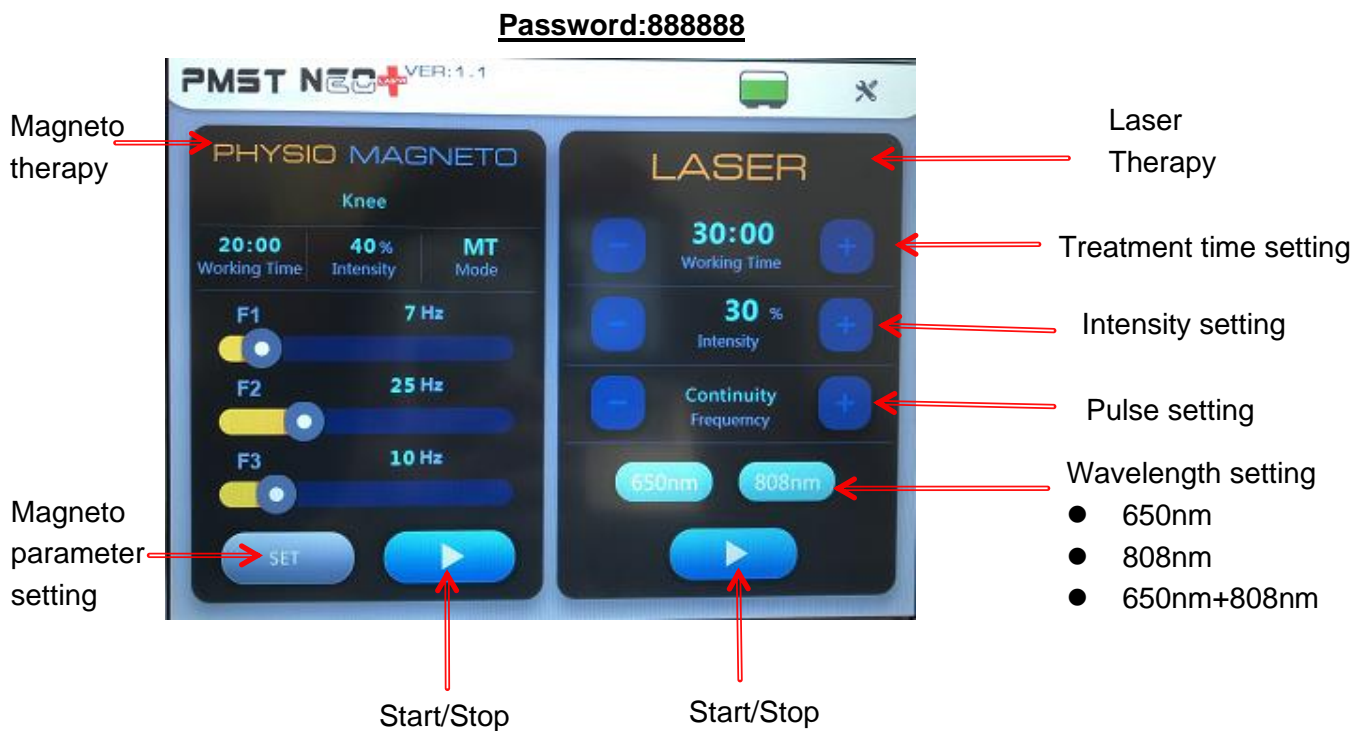
### 【5】 Install steps

1. Install magneto applicator supporter

2. Install laser handle support
3. Install holding arm supporter
4. Install holding arm
5. Add water into the machine.

**!!!Notice:** When we use the machine at the first time, we need to add water into the machine. And the water should be distilled or purified water. We also need to change water every month in order to protect water cooling system. ( With vido guide)

**【6】 Touch screen**



Magneto therapy and laser therapy can work together or work separately.

**Note:** The side that is not marked is the treatment side of the magneto applicator.



Treatment side



**With the logo isn't treatment side**

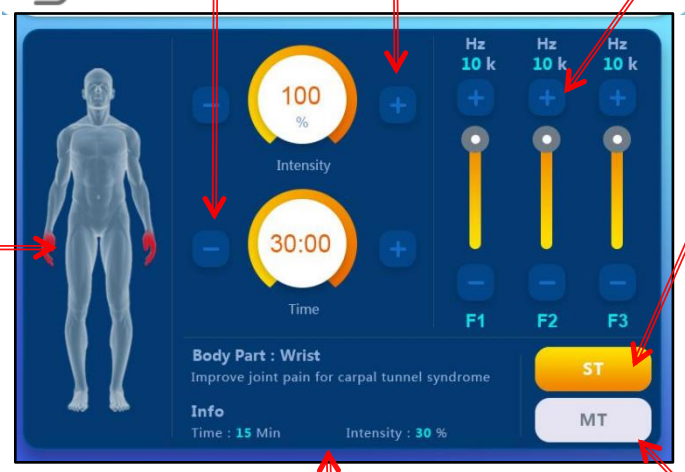
After choosing a body part, intensity and time are preset. We can also change them according to the needs.

After setting up, press here and back to main page

In ST mode, the frequency channel is preset. It can not be adjusted.

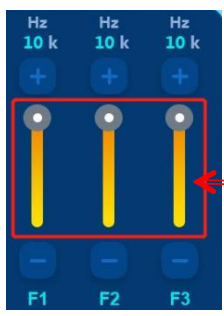
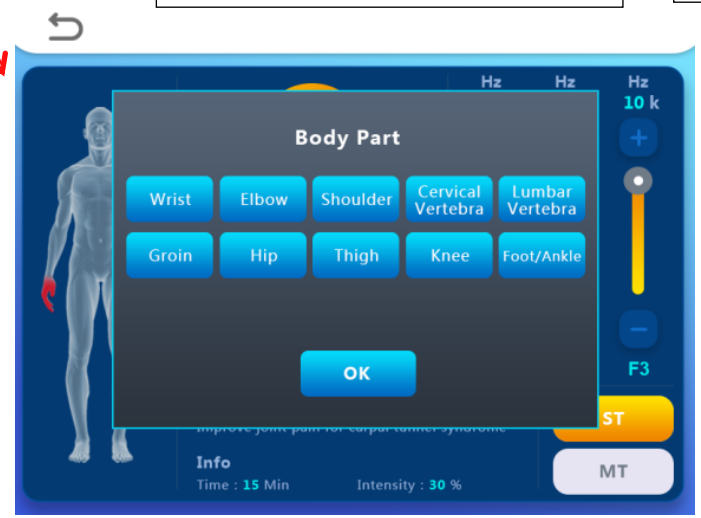
Ten body parts selection

ST mode:  
1000-3000Hz for deeper penetration in bones, tendons and ligaments.



MT mode: 1-100Hz for muscle and cellulite stimulation and contraction. The frequency can be adjusted.

Indication and recommended parameters display for selected body part



In MT mode, by clicking directly on the slider it becomes possible to adjust the persistence time (from 5 to 60 seconds), by clicking again you return to the frequency adjustment(F1: 1-80Hz - F2: 1-100Hz - F3: 1-70Hz).  
In this way you have **complete control** of the cycle operating sequence in time and frequency which will be repeated for a total time defined on the screen.

## **【7】 Magneto therapy**

### **1. Treatment theory**

Magneto therapy ring type coil applicator applies pulsed electromagnetic field and transduces high intensity field pulse into body tissues, which can speed up the healing process of sport injuries, chronic pains and degenerative joint diseases.

### **2. Indications**

#### (1) Degenerative joint diseases

Signs of wear and tear, e.g. arthrosis (knee, hip, hands, shoulder, elbow), herniated disc, spondylarthrosis.

#### (2) Pain therapy

(Chronic) pain, e.g. back pain, lumbalgia, tension, radiculopathies, heel pain.

#### (3) Sport injuries

(Chronic) inflammation of tendons and joints, tendon overload syndrome, osteitis pubis.

### **3. Contraindication**

- ◆ Vascular diseases present in or near the treatment area
- ◆ Heart and brain
- ◆ Local infections in the treatment area
- ◆ Around malignant or benign tumours
- ◆ Directly on cartilage surfaces or near the small facet joints of the spinal column
- ◆ Directly over implanted electronic devices such as pacemakers, analgesic pumps, etc.
- ◆ In areas, in which mechanical energy in the form of vibrations may lead to tissue damage such as metal implants after a fracture

### **4. Precautions to be taken before treatment**

- ◆ If there is only a pure metal object in the vicinity of the treatment site, vibration and heat will occur depending on the distance of the metal object.
- ◆ If there is an implanted circuit in the body, such as a pacemaker, or other circuit device. Strong magnetic fields can cause power failures or damage internal chips.
- ◆ ID cards, car keys, access cards, and other wireless devices near the magnetic ring will

be damaged.



### 5. Recommended steps

- (1) Enter the password of “888888”
- (2) Position the applicator above the treatment area (The side that is not marked is the treatment side of the magneto applicator.)
- (3) Fix the holding arm Choose the body part in the interface. Use the preset parameters or adjust intensity, frequency and treatment time according to the type of person and the specificity of the treatment.
- (4) Press the “start button”

### 6. Recommended treatment protocols

MT Mode							
Area	Energy	Frequency			Time	Sessions	Interval
		F1	F2	F3			
Elbow	30	7	25	10	15mins	6-8	twice a week
Wrist	30	7	25	10	15mins	6-8	twice a week
Shoulder	50	10	29	13	20mins	6-8	twice a week
Cervical Vertebra	50	7	25	10	20mins	6-8	twice a week
Lumbar Vertebra/	50	9	28	12	20mins	6-8	twice a week
Groin	45	6	22	9	15mins	6-8	twice a week
Hip	60	12	29	15	20mins	6-8	twice a week
Thigh	50	7	25	10	20mins	6-8	twice a week
Knee	55	11	29	13	20mins	6-8	twice a week
Foot/Ankle	40	7	25	10	15mins	6-8	twice a week



ST Mode							
Area	Energy	Frequency			Time	Sessions	Interval
		F1	F2	F3			
Elbow	30	1K	3K	2K	15mins	6-8	twice a week
Wrist	30	1K	3K	2K	15mins	6-8	twice a week
Shoulder	50	1K	3K	2K	20mins	6-8	twice a week
Cervical Vertebra	50	1K	3K	2K	20mins	6-8	twice a week
Lumbar Vertebra/	50	1K	3K	2K	20mins	6-8	twice a week
Groin	45	1K	3K	2K	15mins	6-8	twice a week
Hip	40	1K	3K	2K	20mins	6-8	twice a week
Thigh	45	1K	3K	2K	20mins	6-8	twice a week
Knee	40	1K	3K	2K	20mins	6-8	twice a week
Foot/Ankle	35	1K	3K	2K	15mins	6-8	twice a week

## 7. Maintenance

Change the water every month. And the water should be purified or distilled water.

## 8. Advantages

### (1) Combined with shallow and deeper penetration

- ◆ MT mode: 1-100Hz for muscle stimulation and contraction
- ◆ ST mode: 1000-3000Hz for rehabilitation and regeneration of bones, tendons, and ligaments.
- ◆ They can be used for musculoskeletal disorders.

### (2) Combined with shockwave therapy can make treatment more effective

### (3) Smart and intuitive system

- ◆ Preset parameters for 10 body parts
- ◆ Clear indication on the conditions

### (4) Hands-free treatment

- ◆ Pain point: Manual work in tecar therapy is labor-consuming for therapists. Sometimes, in the tecar therapy, the therapists need to do manual work for over 25 mins. It is a tired work.
- ◆ In magneto therapy, after applicator is positioned with the flexible holding arm, the therapy can run without the need for the therapist's intervention.

### **(5) Pain-free treatment**

- ◆ Magneto can provide customers' non-pain but effective treatment.

### **(6) Touch-free treatment**

- ◆ Pain point: In the traditional therapy, customers need to remove their clothes to expose the treatment area. It is not so private, especially for the female.
- ◆ The magnetic pulse can be transferred above the clothes. Customers do not need to take off clothes when taking this therapy. It helps to avoid embarrassment.

## **【7】 Low Diodo Laser therapy**

### **1. Treatment theory**

Cold laser therapy is low-intensity laser therapy that stimulates healing while using low levels of light. The technique is called “cold” laser therapy because the low levels of light aren't enough to heat your body's tissue. The level of light is low when compared to other forms of laser therapy, such as those used to destroy tumors and coagulate tissue.

### **How does cold diodo laser therapy work?**

During this procedure, different wavelengths and outputs of low-level light are applied directly to a targeted area. The body tissue then absorbs the light. The red and near-infrared light cause a reaction, and the damaged cells respond with a physiological reaction that promotes regeneration.

### **What's cold laser therapy used for?**

Doctors, dentists, physical therapists, and other medical professionals use cold laser therapy in a variety of ways. The main uses for cold laser therapy are tissue repair and relief from pain and inflammation.

Sports medicine and physical therapy practices often use cold laser therapy in the treatment of minor injuries and sprains, such as:

- Ligament sprains
- Muscle strains
- Tendonitis
- Bursitis
- Tennis elbow
- Neck pain
- Lower back pain
- Knee pain
- Pain associated with muscle spasms

### Recommended treatment protocols

<b>Diodo Laser</b>					
Area	Energy	Frequency	Time	Sessions	Interval
Elbow	60-80	Continuity	15mins	6-8	twice a week
Wrist	60-80	Continuity	15mins	6-8	twice a week
Shoulder	80-100	Continuity	20mins	6-8	twice a week
Cervical Vertebra	80-100	Continuity	20mins	6-8	twice a week
Lumbar Vertebra	80-100	Continuity	20mins	6-8	twice a week
Groin	70-100	Continuity	15mins	6-8	twice a week
Hip	80-100	Continuity	20mins	6-8	twice a week
Thigh	50-80	Continuity	20mins	6-8	twice a week
Knee	60-100	Continuity	20mins	6-8	twice a week
Foot/Ankle	60-100	Continuity	15mins	6-8	twice a week

### 2. Contraindications

- ◆ Impaired cutaneous thermal sensations
- ◆ Defective arterial cutaneous circulation

- ◆ Dermatitis or eczema
- ◆ Tumors
- ◆ Skin damage due to ionizing radiation
- ◆ Tuberculosis
- ◆ Photosensitivity
- ◆ Hyperesthesia
- ◆ Mental retardation
- ◆ Metal implant
- ◆ Fever

### 3. Recommended steps

- (1) Use the silicone to combine magneto handle and infrared handle
- (2) Use two wavelength and adjust treatment time and intensity based on the needs.
- (3) Use the holding arm to secure the infrared handle.
- (4) Press the "Start" button.

Note:

- (1) The body part which will takes laser therapy cannot covered by the clothes.
- (2) The laser therapy and magneto therapy can work at the same time.
- (3) The naked eyes cannot directly look at the direction in which the laser is thrown.

### 4. Maintenance

The laser handle must not be put under the treatment side of the magneto applicator. The side that is not marked is the treatment side of the magneto applicator.