

SW18 SHOCKWAVE MACHINE

USER MANUAL



Warning

Dear user:

Thanks for using our company's products, in order to fully make use of the products, we sincerely suggest follow:

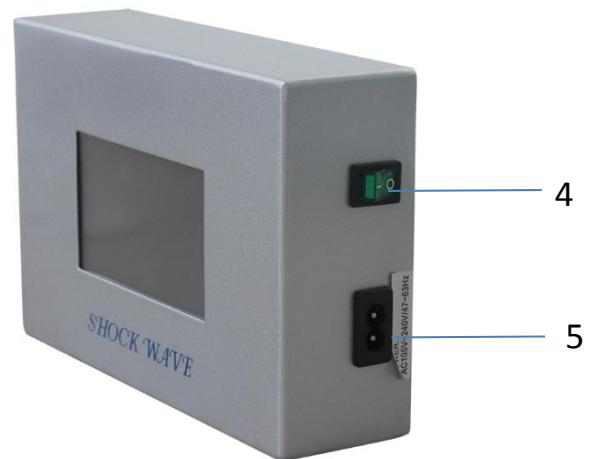
Please read the instruction in detail and keep it well for further reading and consulting.

- ◆◆ Please follow the instruction to fit and operate the machine correctly.
- ◆◆ Please do not remove and change any accessories of the machine.
- ◆◆ It forbids others to open and remove the mainframe except the authorized people in the company.
- ◆◆ It forbids others to change and maintain the machine except the professional people.
- ◆◆ Please contact us if there is any trouble during operation.

Machine Introduction



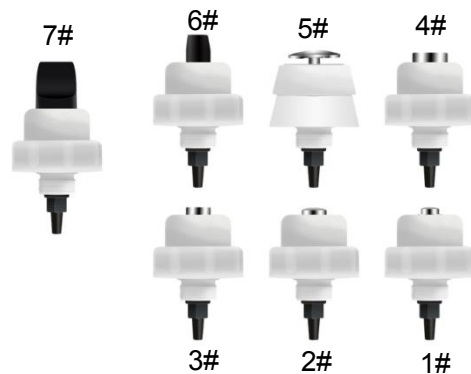
- 1.Touch screen
- 2.Shockwave handle
- 3.Handle jack
- 4.Power switch
- 5.Power wire jack



ACCESSORIES



Handle piece



Work heads



1#



2#



3#

Gray cover



Blue cover

- ◆ The gray cover and blue cover are suitable for work heads: 1# , 2# , 3# ,4 # .
- ◆ Gray cover 1 # is used for treatment and bending parts, such as shoulders, hips and thighs
- ◆ Gray cover 2# use for treatment and curved part such as wrists,elbow and knees.
- ◆ Grey cover 3# use for large treatment area on the body.
- ◆ Do not use gel or other lubricants on the treatment preventing the lubricants get into the work head.If you want to use gel or other lubricants when you do the treatment,please put the blue cover on the work head.

General Introduction

The shockwave system uses the ballistic principle of shockwave generation: A pressure wave is formed via a projectile by using accelerated compressed air. The compressed air is generated by an electronically-controlled ballistic-pressure compressor. Using elastic impact, the kinetic energy of the projectile is transferred into the probe of the applicator and then into the client's body. Consequently, during the treatment, the end of the applicator must be in direct-contact with the skin and subcutaneous tissue.

Shockwave is aimed at the affected areas that are the source of chronic pain. The influence of the shockwave causes to the dissolution of calcium deposits and leads to better vascularization. The after-effects are relief from the pain.

Shockwave has the following effects:

Cellular: Increase in cell membrane transmittance by improving ionic channels activity, stimulation of cell division, stimulation of cellular cytokines production.

Reproduction of vessels in the area of tendons and muscles: Improvement of blood circulation, increase in concentration of growth factor beta 1, chemotactic and mitogenic effect on osteoblasts.

Effect on nitrogen oxide system: Bone healing and remodeling.

Improvement of macro-circulation and metabolism.

Dissolution of calcified fibroblasts.

Supports the production of collagen.

Reduction in tissue tension.

Analgesic effect.

Basal operation

- Put accessories well and connect them to the host.
 - Insert the plug of shockwave work handle into output jack.
 - Insert the plug of service break into output jack.
 - Choose appropriate work head. hold the work handle in one hand and unscrew the work head from the work handle with the other hand (anticlockwise),screw the new work head tightly into the work head(clockwise).
- Insert the plug of power supply line into socket turn on general power switch.
- In interface as (Fig 1)
 - Click on “Basic setting” to select language set time and date.
NOTICE: Advanced setting is only for engineering debugging, not for user.
 - Click on the corresponding picture where you want to treatment of the screen to enter function interface.



(Fig 1)

- This system include 10 function operation parts.

This use's manual use elbow treatment for example. In interface as (Fig 1), click on “Elbow” to enter interface.
- In the “Elbow” interface :
 - “Preselection 2500 Times” stands for when the system works to 2500 time every time, it will pause automatically. please click on any place of the screen according to the hint.
 - “Current” stands for the working time of the current treatment course. Click on “RESET” to clear the number of current treatment
 - “Frequency 1HZ” stands for the system default work frequency is 1HZ, click on “<” and “>” to regulate. The range is :1HZ-16HZ
 - “Energy 60MJ” stands for the system default work frequency is 50MJ, click on “<” and “>” to regulate. When the frequency is 1Hz to 12HZ, the energy is rang 60-185MJ, when the frequency is 13Hz or 14Hz, the energy is rang 60-120MJ, when the frequency is 15HZ or 16HZ, the energy is rang 60-90MJ
 - Click on “▶” button, start working, click on “||” stop working

ED Treatment

The frequency of ED treatment is 1-16HZ. The recommended frequency is 3-8HZ.
The energy of ED is 60 70 90 110 130 150 180 200 MJ,
please adjust the energy according to the customer's feeling from low to high during operation

2. Treatment Programs

- (1) Target to spongy tissue in 5 different areas
- (2) 300 impacts per area, total 1500 impacts in one treatment
- (3) Twice a week, treat consistently for 3 weeks, then stop for 3 weeks.

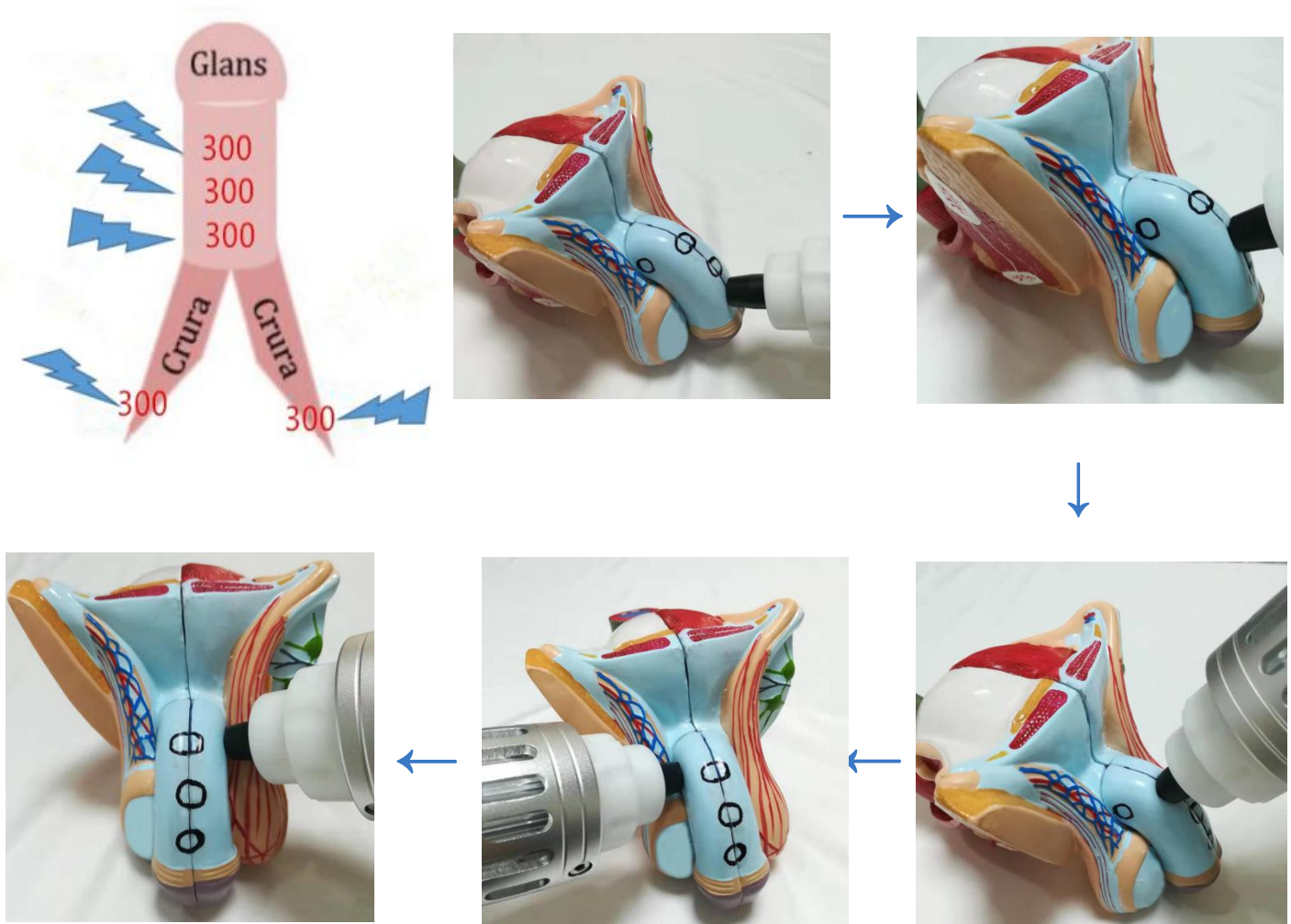
And start next course.

- (4) Should be more impacts at the top end of penis, and Less impacts at the bottom of penis.

PS: This program is only for reference. Please follow the doctor's advice.

3. Operation guide

- (1) Choose the 6# and 7# exclusive ED treatment work head, Along the 5 areas of the spongy tissue, 300 impacts per area, total 1500 impacts in one round, about 20 minutes.



(2)#5 head for prostate



Operation

1. Clean the treatment part.
2. According to the treatment part to select appropriate handle piece.
3. Set suitable frequency (the max range is 1HZ-16HZ) and energy (the max range is (60MJ-200MJ). For ED treatment, the frequency range is 1-10HZ and the energy range is 60MJ-150MJ.
4. Operating on. Beautician hold the work head in one hand place the handle piece on area/point of treatment . The weight of the work head means that it is normally not necessary to apply pressure to the treatment area/point.
5. Clean the leftovers with hot towel, use warm towel to clean the work head after treatment.

Cautions:

- 1.Despite high internal damping as a result of the weight and design of the work head, continuous vibrations may cause strain to the user's hand.
- 2.To avoid heat accumulation in the work head, it is essential to ensure that the air vents at the top and particularly on the base of the work head are not blocked by the hand holding it or anything else.
- 3.Applicator head ae expendable parts and must be replaced after a certain period Functionality.

Treatment parameter

Patients can adjust energy and frequency based on the severity of their damage.

Application Treatment Recommendation					
Area	Frequency/energy	Shocks	Sessions/time	Total shocks	Interval
Elbow	3HZ/70MJ	2000-2500	3-5	6000-12500	5-7days
Hand/Wrist	1HZ/70MJ	2000	3-5	6000-10000	5-7days
Pubic Symphysis	3HZ/90MJ	2000-2500	5	6000-12500	every day/1 day
Knee	3HZ/90MJ	2000	3-5	6000-10000	5-7days
Foot/Ankle	3HZ/70MJ	1000	3-5	3000-5000	1days
Shoulder	6HZ/120MJ	2000-2500	3-5	6000-12500	5-7days
Lumbar Region	8HZ/150MJ	2000-2500	3-5	6000-12500	5-7days
Fat accumulate	10HZ/150MJ	2000-2500	5	6000-12500	5-7days
Hip	4HZ/180MJ	2000-2500	5	6000-12500	5-7days

Contraindicatio

- 1.Application to certain tissues: The eyes and the surrounding area, the myocardium, the spinal cord, the gonads, the kidneys and the liver.
- 2.Blood disorders, coagulation problems or the use of anticoagulants.
- 3.Polypus in the area of treatment.
- 4.Thrombosis.
- 5.Tumor diseases.
- 6.Polyneuropathy.
- 7.Growing cartilage in children.
- 8.Therapy using corticoids.
- 9.Inapplicable on areas in proximity to large nerve bundles, bundles, blood vessels, the spinal cord and the head.

Warranty description

According to the company's regulations, the machine warranty period is one year, and the warranty period for the handles and accessories is 3 months.

1. During the warranty period, if it is a fault caused by the quality of the product itself, please contact the after-sales department and present this warranty card.
2. Do not accept machines that have failed due to unauthorized modifications.
3. Once the warranty card has been altered, the warranty will be invalid immediately.
4. Please keep the warranty card as the warranty certificate of this machine.
The following conditions are not free of repair.
 1. No warranty certificate
 2. Failure caused by do not operating the machine in accordance with the instructions or video.
 3. Damage caused by disassembling the machine without the permission of the company.
 4. Failure, scratching or damage due to movement or falling.
 5. The user has improper storage and damage caused by improper use.

Warranty card

Product Model: _____ Product Name: _____

Purchase Store: _____ Purchase Date: _____

Customer Name: _____ Customer Phone: _____

Purchase Store: _____ Purchase date: _____

Product fault description: _____
